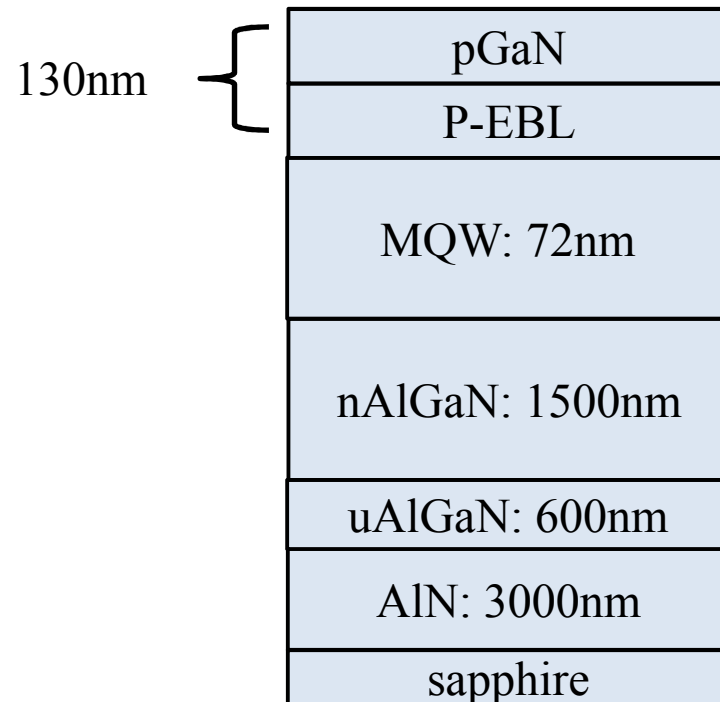
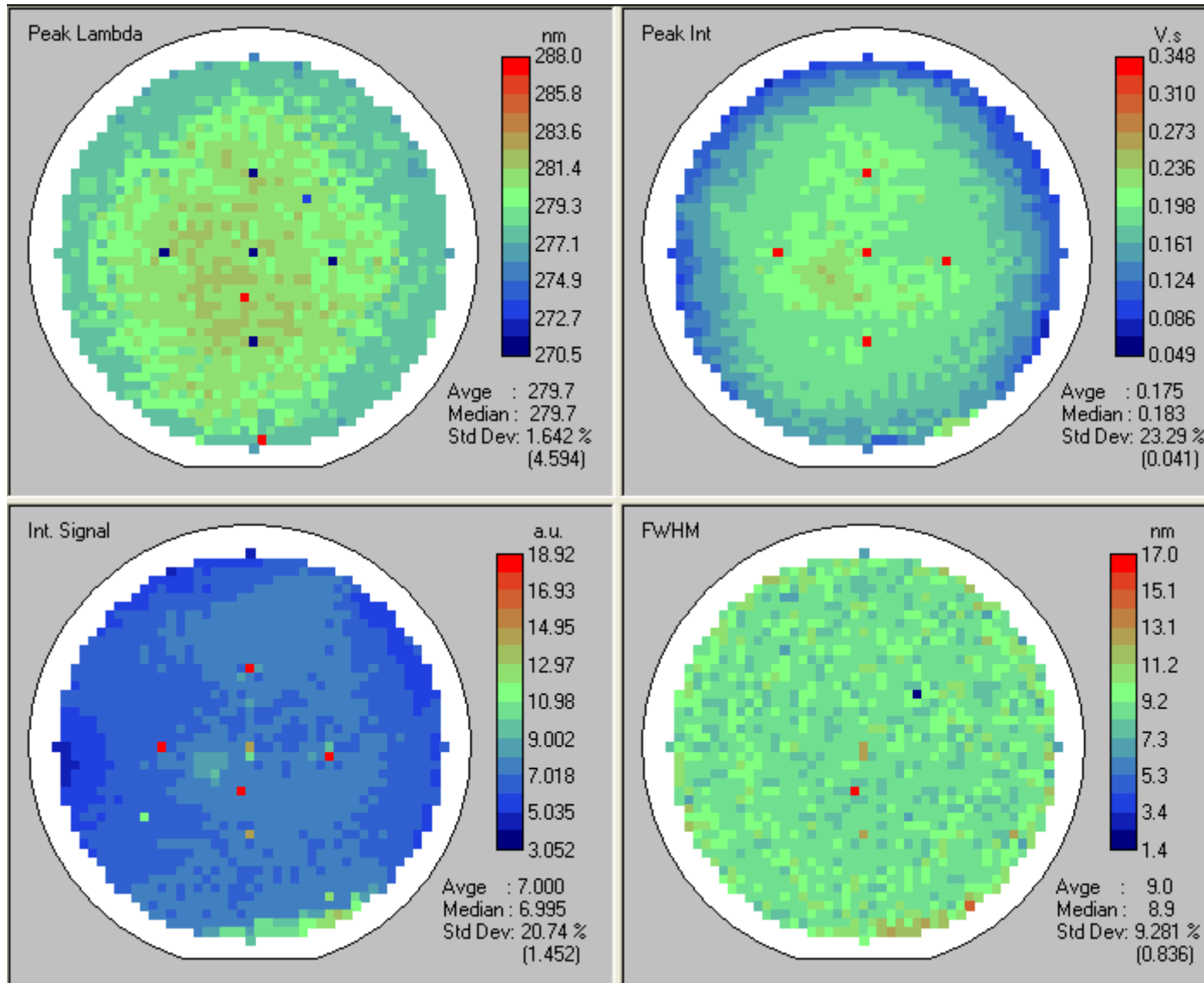


UVC LED Structure



- 電子濃度： $1E19 \text{ cm}^{-3}$
- 空穴濃度： $3E17 \text{ cm}^{-3}$
- Mesa etching depth建議約550 nm
- 推荐退火工艺：炉管，Ti/Al,温度600摄氏度，Ti/Al/ni/Au 温度800摄氏度；

UVC LED-1-PL



Exclusion 3mm

UVC LED-1-PL

